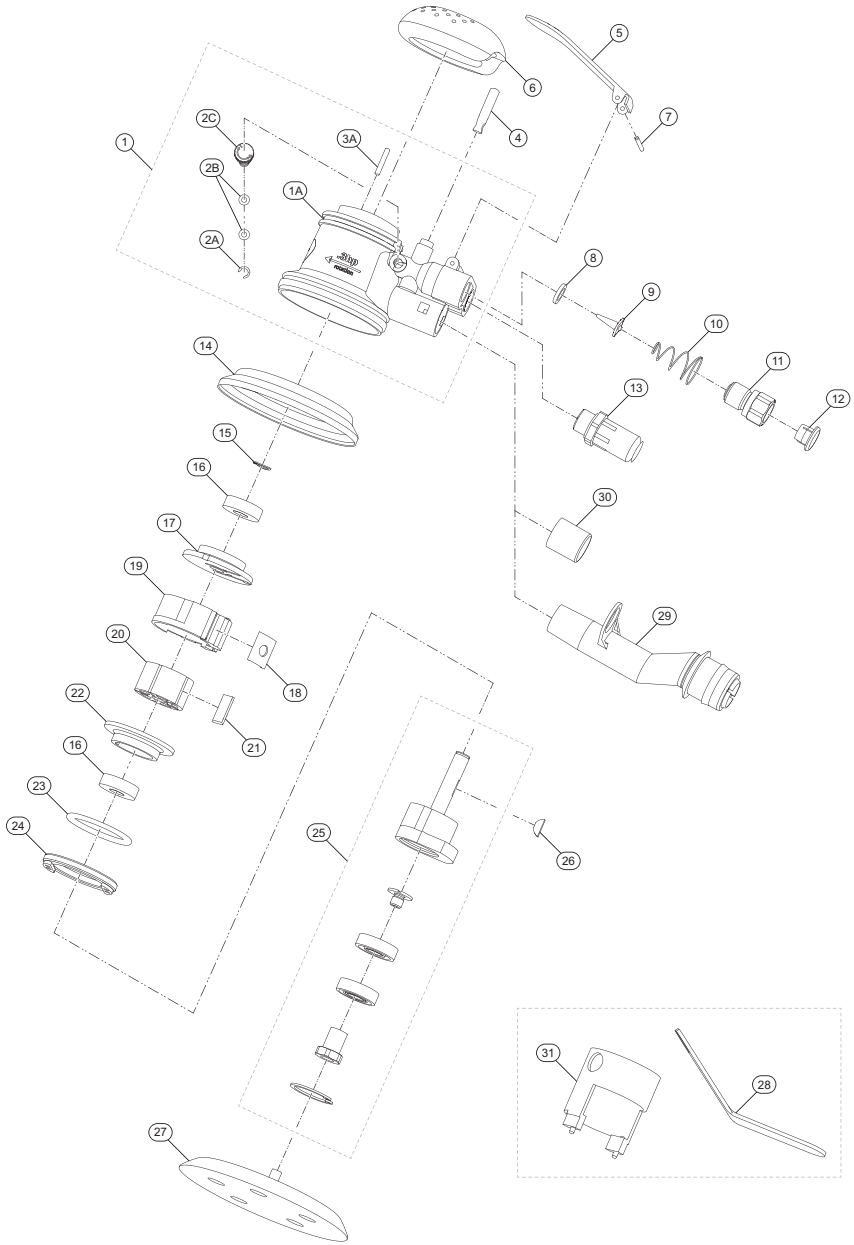


5151 and 5152 Series, RO Sander - Exploded View



(Dwg. 47744033-1)

5151 and 5152 Series, RO Sander - Parts List

Item	Part Description	Part Number (CCN)	Item	Part Description	Part Number (CCN)
1	Housing Assembly	5151-A40 (47744032001)	21	Vane Pack (set of 5)	48254-42-5 (80161482)
1A	Housing	---	22	Front Endplate	(04648929)
*	Regulator Assembly	4151-A165 (10327047)	23	O-Ring	(04649113)
2A	Snap Ring	---	24	Ring Lock	(04648853)
2B	O-Ring (2 required)	---	25	Counterbalance Assembly	
2C	Regulator	---		for 5151-6	ROS-A190 (47748528001)
3A	Pin	---		for 5151-6-HL and 5151-HL-WP	(80092810)
4	Valve Stem	(04648770)		for 5151-5 and 5151-5-HL	(80090244)
5	Lever			for 5152-6	ROS-A190-2 (47739991001)
	for 5151-6, 5151-6-HL, 5151-HL-WP, 5151-5, and 5151-5-HL	5151-A93 (47746094001)	for 5152-6-HL	(80090301)	
	for 5152-6, 5152-6-HL, 5152-5, and 5152-5-HL	5152-A93 (47749582001)	for 5152-5 and 5152-5-HL	(80092885)	
6	Grip Ring	4151-747B (80095151)	26	Key	(04648754)
7	Spring Pin	(04649117)	27	Sanding Pad	
8	Valve Seat	(04648804)		for 5151-6 and 5152-6 (6" Vinyl Pad)	VPAD-6 (80126683)
9	Tip Valve	(04648796)		for 5151-6-HL and 5152-6-HL (6" H and L Pad)	VPAD-6HL (80126691)
10	Spring	(04648747)		for 5151-5 and 5152-5 (5" Vinyl Pad)	49096-1 (04320578)
11	Inlet Adapter	(04649083)		for 5151-5-HL and 5152-5-HL (5" H and L Pad)	VPAD-5HL (47749105001)
12	Plastic Plug	(22030159)	28	Pad Wrench	(04648739)
13	Muffler Assembly	4151-A810	29	Vacuum Adapter (cuff size)	
14	Shroud Guard	(04648887)		25 mm (1") Vinyl Pad Tool	4151-A809A-25 (45735024)
15	Snap Ring Bowed	(04648762)		28 mm (1 - 1/8") H and L Pad Tool	4151-A809A-28 (45735032)
16	Bearing Ball (2 required)	(04648812)		32 mm (1 - 1/4") H and L Pad Tool	4151-A809A-32 (45735040)
17	Rear Endplate	(04648945)	30	Plug	(04649059)
18	Cylinder Seal	(04649042)	31	Wrench ASM	48869 (04153102)
19	Cylinder Assembly	R035C-A3 (47743738001)			
20	Rotor	(04648820)			

* Indicates not illustrated.

Parts and Maintenance

When tool life has expired, it is recommended that the tool be disassembled, degreased and parts separated by material for proper recycling.

Tool repair and maintenance should only be carried out by an Authorized Service Center.

Refer all communications to the nearest **Ingersoll Rand** office or distributor.

Related Documentation

Manuals can be downloaded from ingersollrand.com

For additional information, refer to:

Product Safety Information Manual 04580387

Product Information Manual 47750788

Declaration of Conformity 47745831